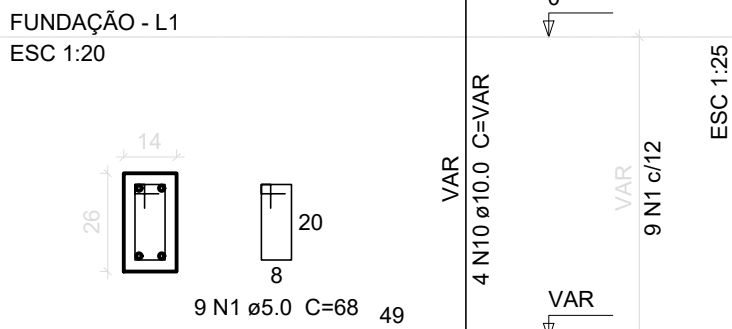
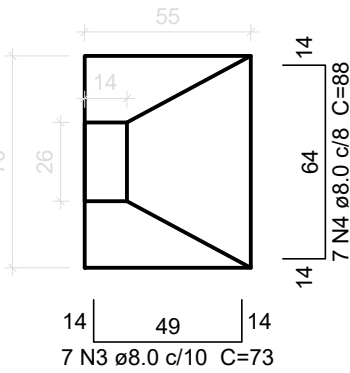


P1=P3

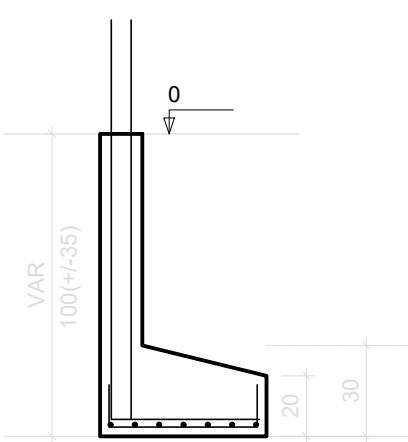


S1=S3
PLANTA
ESC 1:25

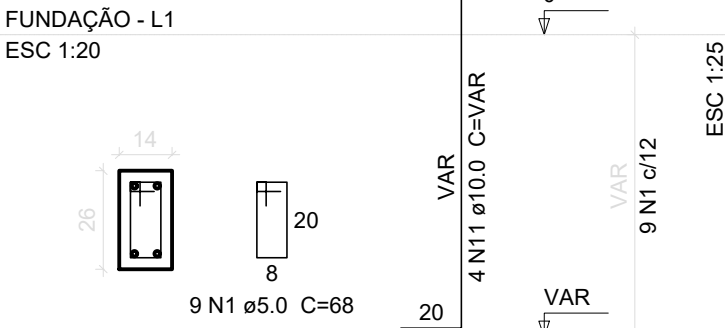


Solo com capacidade de suporte > 1.50 kgf/cm²
Solo compactado sobre a sapata
peso específico > 1600.00 kgf/m³

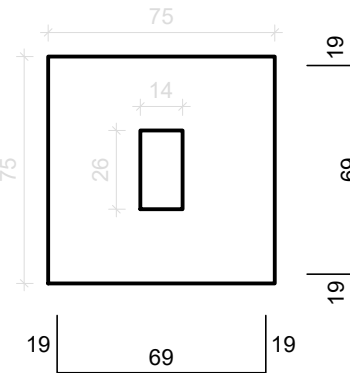
CORTE
ESC 1:25



P2=P4

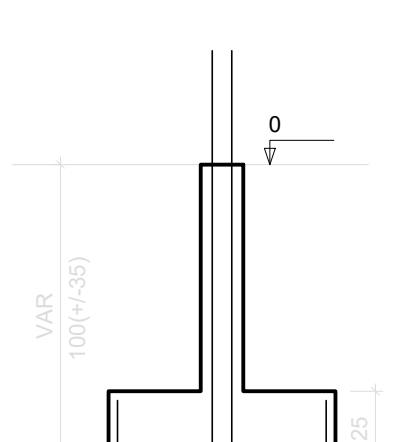


S2=S4
PLANTA
ESC 1:25

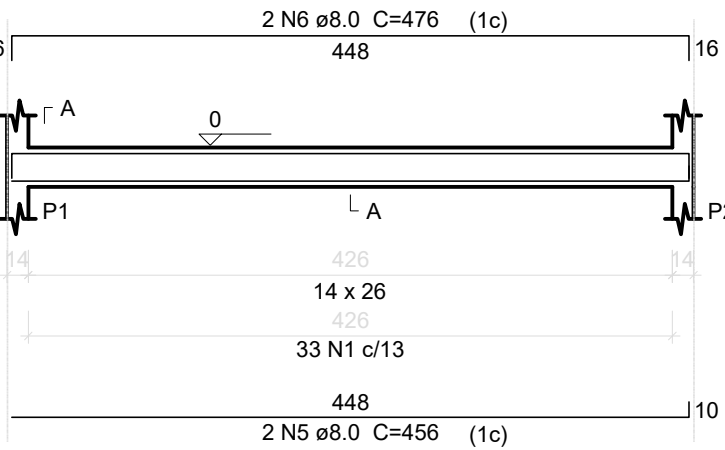


Solo com capacidade de suporte > 1.50 kgf/cm²
Solo compactado sobre a sapata
peso específico > 1600.00 kgf/m³

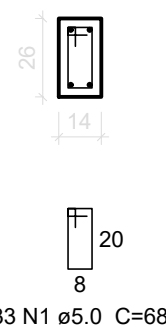
CORTE
ESC 1:25



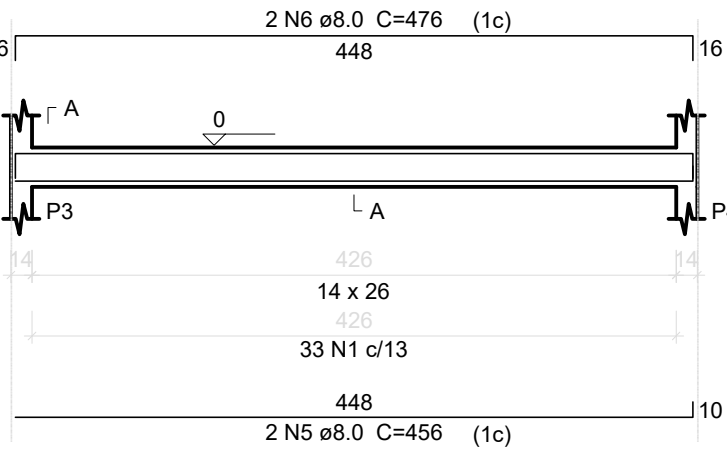
VB1
ESC 1:50



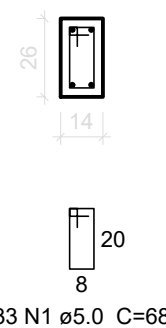
SEÇÃO A-A
ESC 1:25



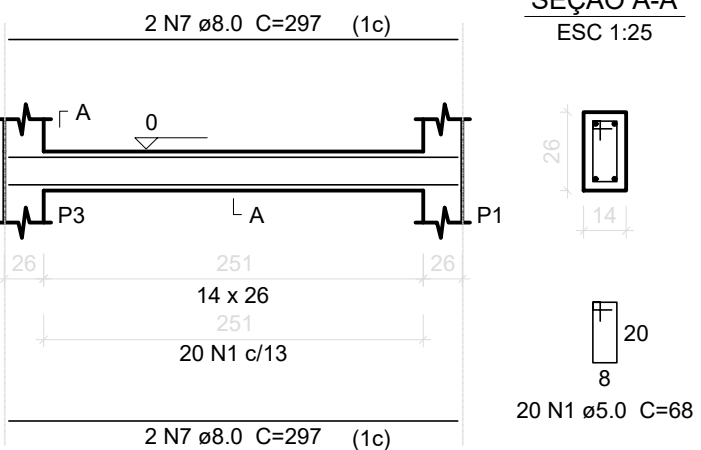
VB2
ESC 1:50



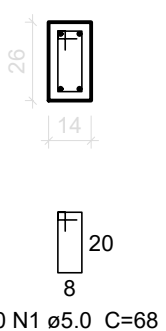
SEÇÃO A-A
ESC 1:25



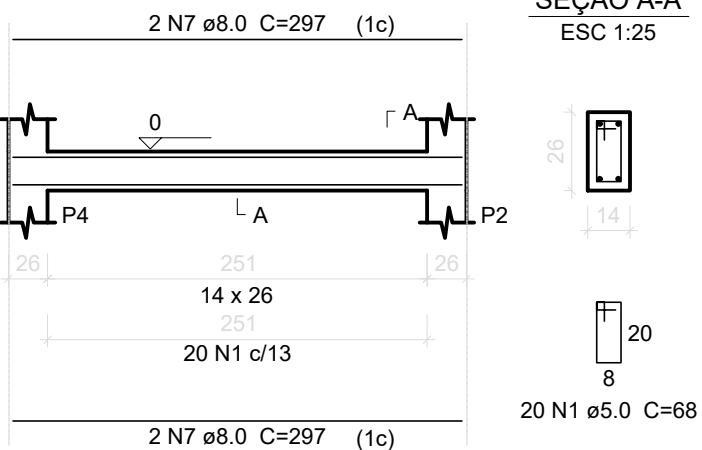
VB3
ESC 1:50



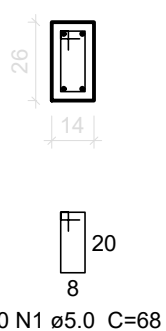
SEÇÃO A-A
ESC 1:25



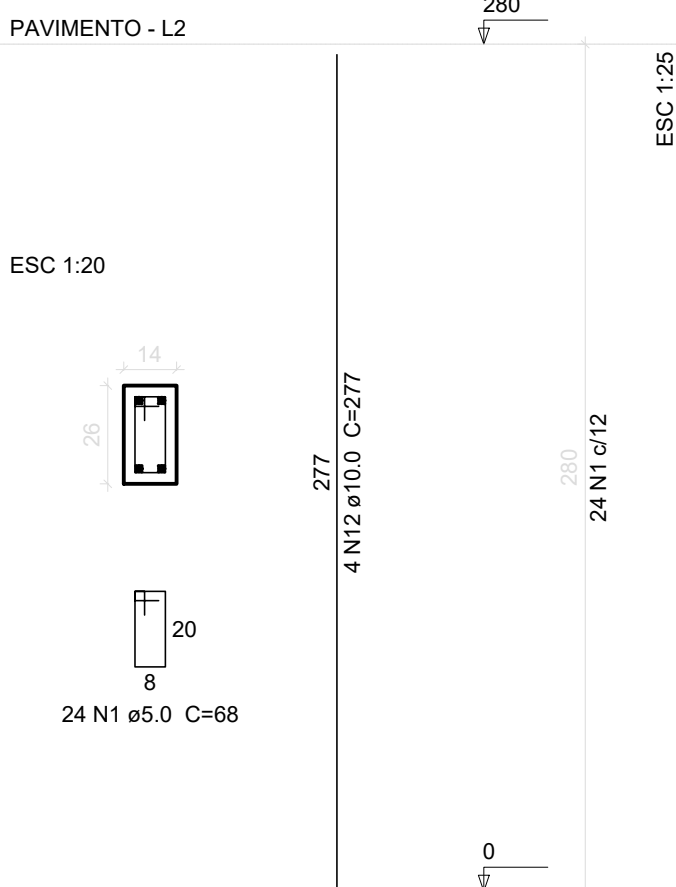
VB4
ESC 1:50



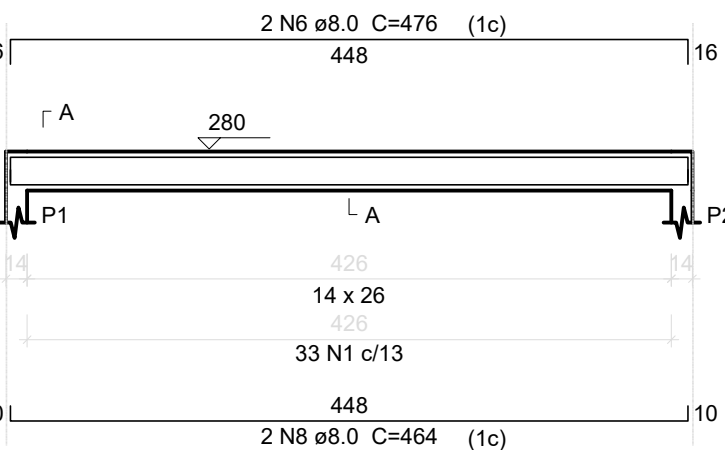
SEÇÃO A-A
ESC 1:25



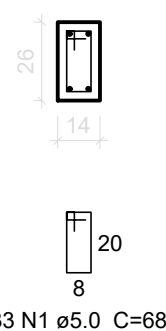
P1=P2=P3=P4



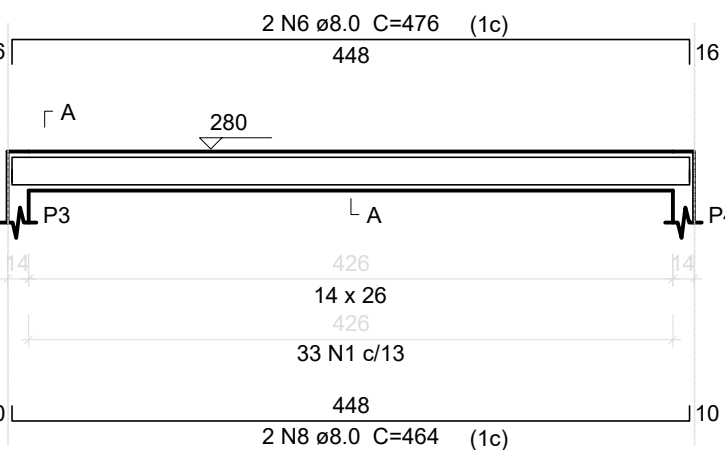
V1
ESC 1:50



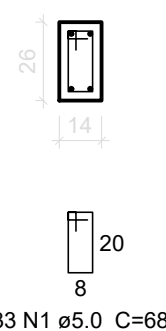
SEÇÃO A-A
ESC 1:25



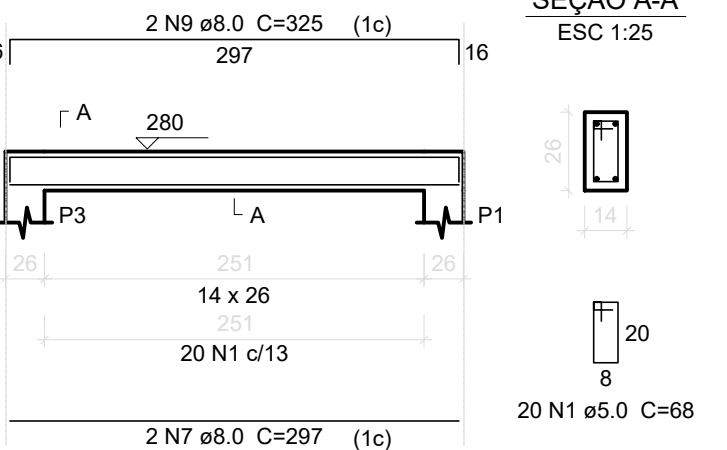
V2
ESC 1:50



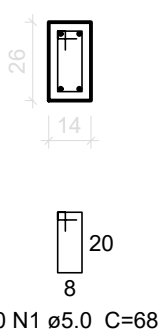
SEÇÃO A-A
ESC 1:25



V3
ESC 1:50



SEÇÃO A-A
ESC 1:25



Relação do aço

FUNDAÇÃO:		2xS1	2xS2		
		VB1	VB2		
		VB3	V1		
PAVIMENTO:		4xP1	V3		
		V2			
		V4			
ÁÇO	N	DIAM	Q	UNIT (cm)	C.TOTAL (cm)
CA60	1	5.0	344	68	23392
CA50	2	6.3	32	104	3328
	3	8.0	14	73	1022
	4	8.0	14	88	1232
	5	8.0	4	456	1824
	6	8.0	8	476	3808
	7	8.0	12	297	3564
	8	8.0	4	464	1856
	9	8.0	4	325	1300
	10	10.0	8	VAR	VAR
	11	10.0	8	VAR	VAR
	12	10.0	16	277	4432

Resumo do aço

ÁÇO	DIAM	C.TOTAL (m)	PESO + 10 % (kg)
CA50	6.3	33.3	9
	8.0	146.1	63.4
	10.0	71.6	48.6
CA60	5.0	234	39.7
PESO TOTAL			
CA50	120.9		
CA60	39.7		

Vol. de concreto total (C-25) = 2.13 m³
Área de forma total = 34.78 m²

NOTAS

1 - Medidas em metros

LEGENDA DA ALVENARIA

LEGENDA COBERTURA

ATUALIZAÇÃO



CARVALHO AMARAL ENGENHARIA
CNPJ Nº: 16.783.066/0001-35
Avenida Mestre Firmino, nº 726, 1ª andar
Centro, Montes Claros/MG
CEP: 35401-074

RESP. TEC. THAIS SARAIVA SOUSA ALMEIDA
REG. CREA: 244.557/D



PREFEITURA MUNICIPAL DE
SÃO ROMÃO/MG
CNPJ Nº: 24.891.418/0001-02
Av. Newton Gonçalves Pereira, 337
Centro, São Romão/MG
CEP: 39.290-000

MUNICÍPIO/ÁREA:
MUNICÍPIO DE SÃO ROMÃO/MG
RESPONSÁVEL CONTRATANTE:
PREF. MUN. DE SÃO ROMÃO/MG

TÍTULO: PROJETO ESTRUTURAL DEPÓSITO
REFORMA DA CRECHE E PRÉ-ESCOLA MUNICIPAL CANTINHO FELIZ
PILARES, SAPATAS E VIGAS BALDRAMES

ENDEREÇO DA OBRA:
RUA MESTRE QUINCAS, Nº 115

DATA: 10/01/2022

ESCALA: INDICADA

PRANCHA:

ARQUIVO: DE-2022.1713-MG.SR-EST-EXE.001=0

02/02